

# **School Admissions Forum**

## **Increasing Secondary School Places**

7<sup>th</sup> February 2014  
Ashley Simpson

# Context

---

- Coventry currently has 19 secondary schools – 4 Trust, 12 academies and 3 VA;
- Planning of secondary school places is based on a citywide approach;
- Since 2002/03 Y7 -11 secondary numbers have fallen by 8%;
- Between 2014 and 2020 numbers are expected to increase by 18%;
- Overall secondary numbers have been sustained by a rising post 16 population;
- Post 16 staying on rates in schools are comparatively high 51.4% (Y11-Y12) and 41.7% (Y11 – Y13);
- Increased cohorts moving through primary will begin to impact on Year 7 intakes from September 2014 onwards;
- BY 2023/24 we will need to make provision for approximately 4,740 Year 7 pupils (including a 5 % planning margin).

## Additional School Places: September 2014

---

Three new secondary institutions are expected to open in Coventry in September 2014:

- The WMG Academy for Young Engineers (UTC). The PAN will be 160 initially Year 10 and Year 12 students will be admitted. The UTC will be located adjacent to Westwood Academy.
- Seva School will be an all through 4 -16 school which will have a Pupil Admission Number (PAN) of 100 pupils in Reception and 150 pupils for Year 7. There will also be a PAN of 100 pupils for Year 1 in 2014 only. There will also be a PAN of 100 pupils for Year 2 in 2014 only. No site has yet been identified.
- The Coventry Leadership Academy for Girls will provide 500, 11 to 16 year old places plus 200 post 16 places with a Year 7 PAN of 100. Initially admissions will be to Year 7 only in September 2014. The school will open on the former Courtaulds Sports and Social Club site at Lockhurst Lane, Foleshill.

## Proposed Strategy

- DfE recommends a 5% planning margin to enable a degree of parental preference to be exercised;
- Based on total PAN of 4,148 (includes Free Schools) there will be sufficient citywide places until 2017/18 assuming no further capacity is added;
- In 2018/19 a 3FE (1FE = 30 places) shortfall of Year 7 places is forecast rising to a 20FE shortfall in 2023/24 assuming a 5% planning margin.

Year	2014/15	2015/16	2016/17	2017/18	2018/19	2019/20	2020/21	2021/22	2022/23	2023/24
PAN	4,148	4,148	4,148	4,148	4,148	4,148	4,148	4,148	4,148	4,148
NOR	3,544	3,658	3,868	3,828	4,023	4,285	4,209	4,471	4,501	4,512
NOR +5%	3,721	3,841	4,061	4,019	4,224	4,499	4,419	4,695	4,726	4,738
Surplus/ Deficit Actual	427	307	87	129	-76	-351	-271	-547	-578	-590
Surplus/ Deficit FE					-3	-12	-10	-19	-20	-20
Annual Additional FE Required					3	9	0	7	1	0

## Additional Places Required

---

**It therefore seems prudent to plan for an additional 20 forms of entry over the next 10 years phased in from 2018/19 onwards, which is the broadly equivalent of expanding all current secondary and planned free schools by one form of entry.**

# Planning Assumptions

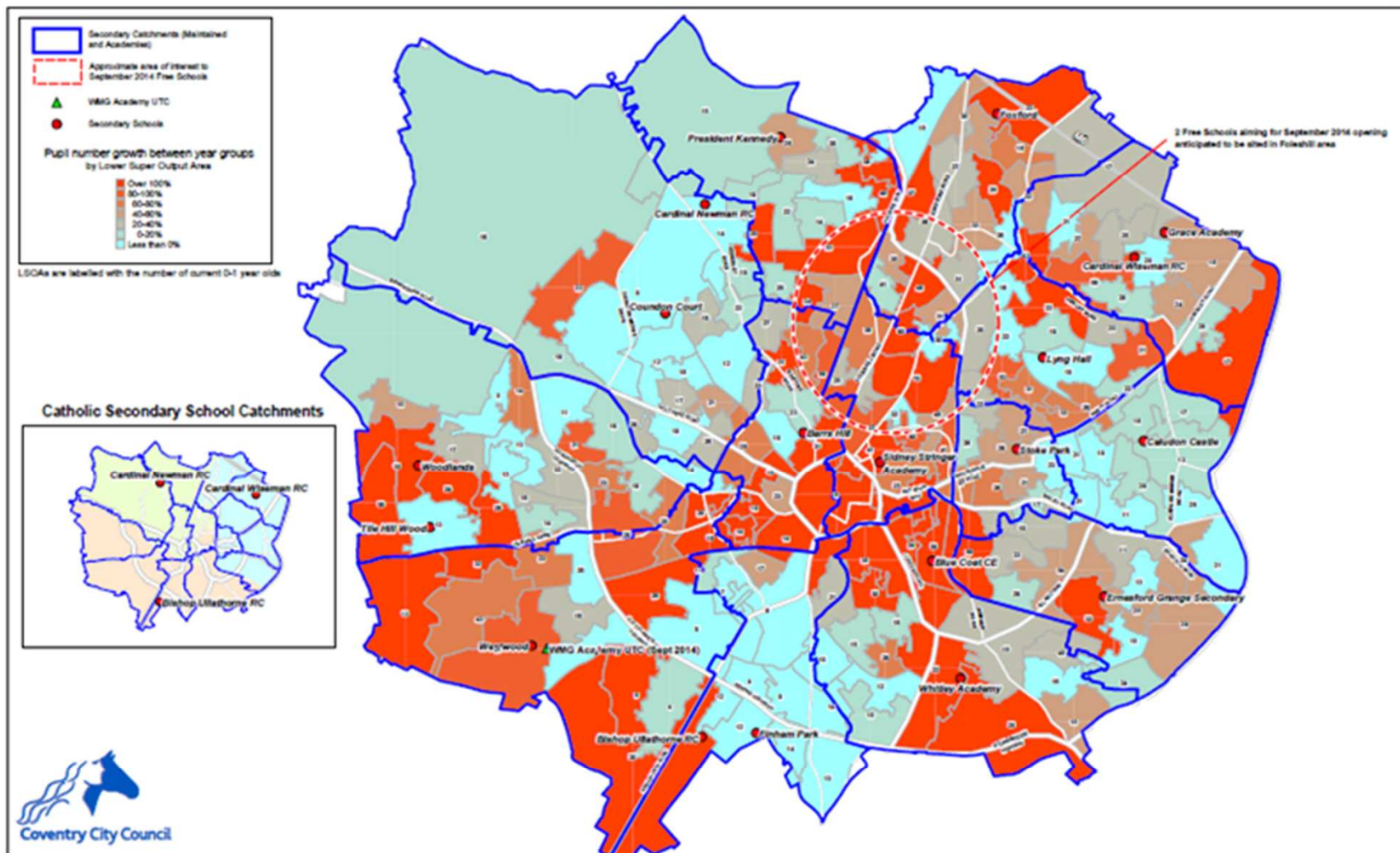
---

- The projected shortfall of places is therefore based on the following assumptions:
- A 5% planning margin is maintained over the planning period;
- Current PAN's of existing schools do not change over the planning period;
- No further secondary Free Schools are opened in the planning period;
- Impact of new housing developments is taken into account where known and reflected in the City Council's '*Coventry Development Plan Annual Monitoring Report*';
- Potential Future housing developments not yet subject to land allocation and/or planning consent are not included.

The strategy will therefore regular review and update to take account of any further changes in the demand for or supply of school places, particularly from the Academy and Free School sector.

# Secondary School Pupil Growth Analysis

Growth implication of difference in number of current Year 7 pupils compared to 0-1 year olds (those who will be Year 7 in 2023/24)



© Crown Copyright and database right (2013). Ordnance Survey 100025254.

Date Created: 17/06/2013  
Data Team: CLYPD

## Legal Context

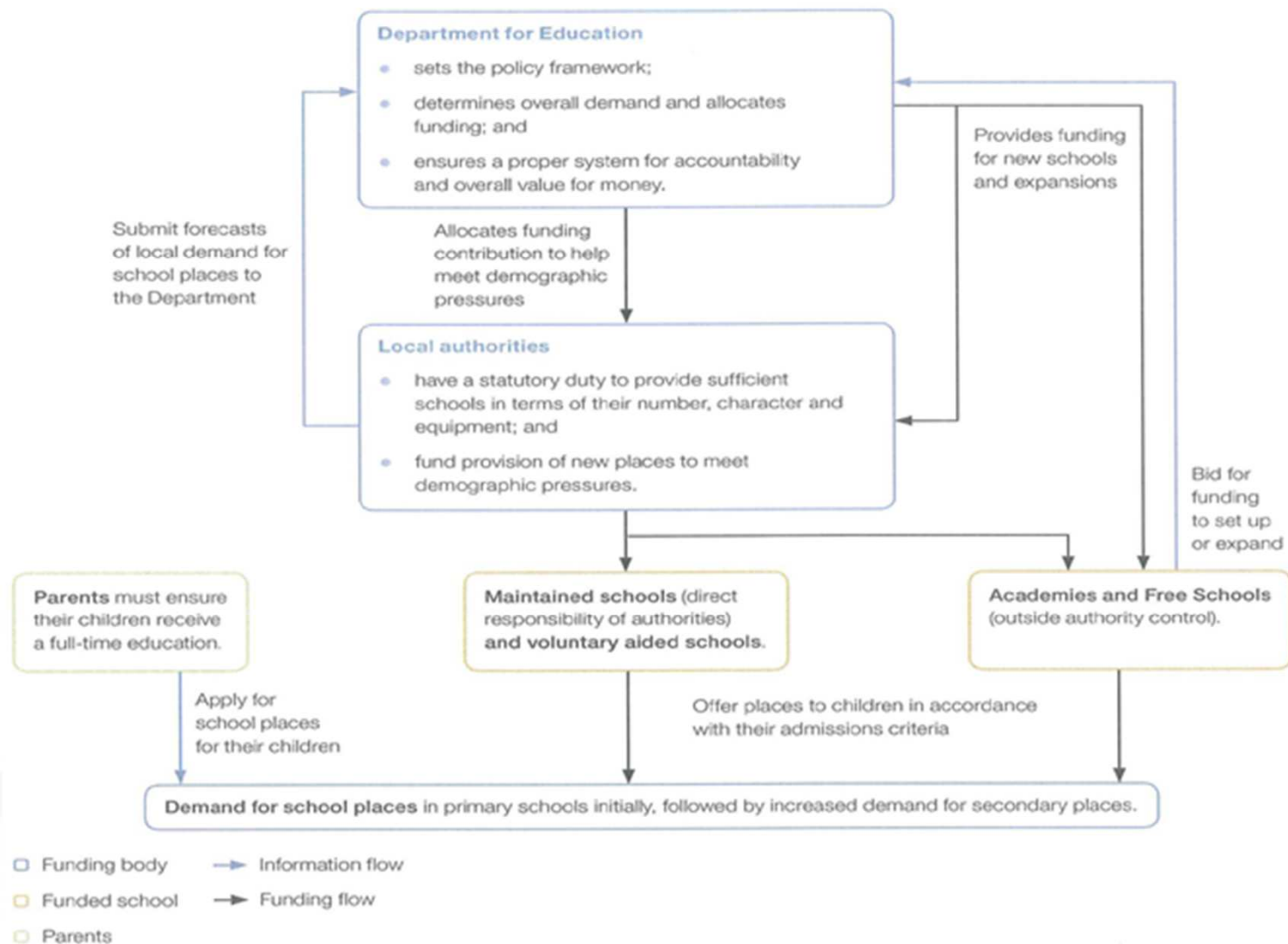
---

- The City Council has a duty under the 1996 Education Act to ensure that there are sufficient school places for those who require them.
- The DfE set the policy framework and allocate the funding to local authorities for Basic Need (additional places).
- The challenge for the Council is that while it retains a legal responsibility to ensure sufficiency of places, from 1<sup>st</sup> January 2014 there are no local authority maintained secondary schools. The Council has no power of direction over an academy – only the Secretary of State can direct an academy to expand.
- The Education Act 2011 changed the arrangements for establishing new schools and introduced section 6A (the academy/free school presumption) to the Education and Inspections Act 2006. Where a local authority thinks there is a need for a new school in its area it must seek proposals to establish an academy/free school.



## Roles and responsibilities in providing school places

The Department is responsible for the policy framework and overall value for money. Local authorities are responsible for delivering sufficient schools



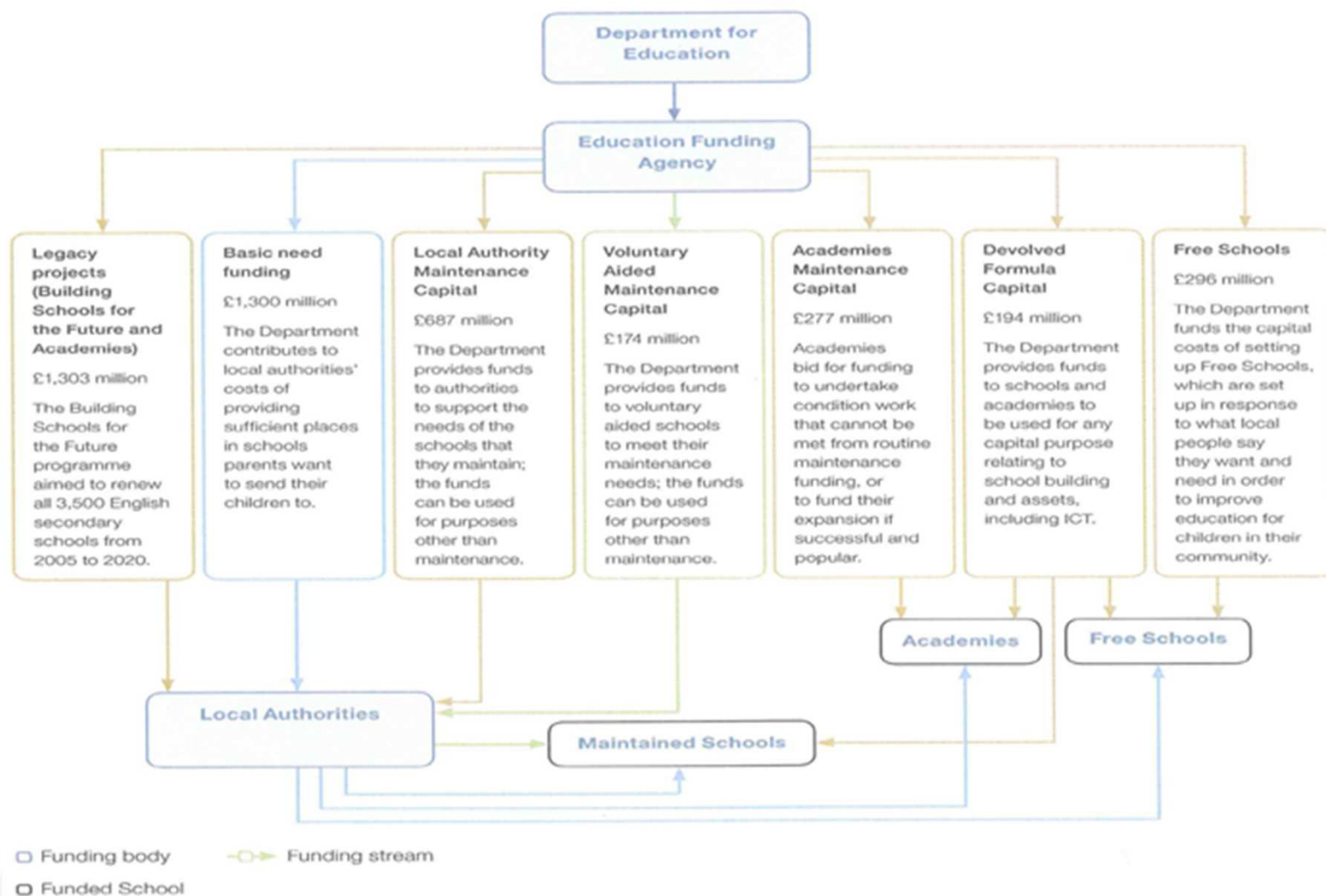
## Financial Context

---

- The main funding source for additional school places is Basic Need, although the Council has also used Capital Maintenance , Section 106 and corporate capital funding;
- This is because the level of Government funding on average only accounts for approximately two thirds of the overall cost of providing school places;
- The DfE recently announced that the Basic Need settlement for Coventry in 2015-16 and 2016-17 will be zero. Officers are currently challenging the basis for this decision;
- It is difficult at this stage to estimate the cost of supplying the additional secondary places .To a greater extent this will depend on the emerging strategy and specifically the relative proportion of places created through expansions and free schools. The costs associated with the establishment of free schools are entirely met by Government.

## The Department's capital funding 2012-13

The Department's capital funding of schools totalled £4,231 million<sup>1</sup>, of which £1,300 million was specifically for new places



## Next Steps?

---

- A Working Group comprising key stakeholders (Council officers, Headteachers, Archdiocese of Birmingham and Coventry Diocesan Board of Education) has been established to review current provision and establish a strategy for increasing the number of secondary school places;
- Membership will be reviewed on an ongoing basis to ensure that any new providers are also involved;
- Feasibility studies have been commissioned for all 19 current secondary schools to establish the potential for expansion on existing sites;
- This work will commence in February 2014 and a final report will be presented to the Working Group at Easter 2014.